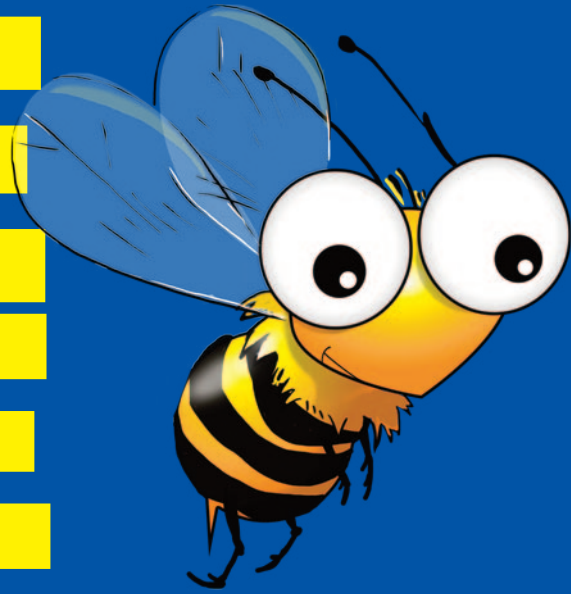


BEE LINE



NEWS

A Newsletter by the Westchester County Department of Public Works and Transportation Vol. 2

2019 SUMMER SERVICE CHANGE

Schedule Changes for Summer 2019 • Effective Monday, June 17, 2019

Route 7

The westbound 4:43 p.m. weekday trip from Petrillo Plaza in Mt. Vernon will now begin at 4:48 p.m.

Route 12

The northbound 7:15 a.m. weekday trip from the White Plains TransCenter will now serve the Westchester County Airport Terminal.

Routes 13, 75 and 91

Full seasonal service to Playland will start on Tuesday, June 18. To better accommodate Playland visitors taking the train, there will be additional Friday night service on the Route 75 from the Rye Station between 6:00 p.m.-7:30 p.m. (*Coupon for Playland included in this newsletter!*)



Route 60

The southbound 2:00 p.m. weekday trip at the White Plains TransCenter will now begin at 2:05 p.m.



Bee-Line's Chauffeur of the Year: Steven Green!

Steven has been a Bee-Line bus driver since 1988. His dedication, excellent attendance and safety record are just some of the reasons why he has earned the prestigious title by Liberty Lines Transit, Bee-Line's operator. Riders value Steven so much that they bake him cookies. His father, who worked for New York Bus Service for 30 years, inspired him on this career path.

Getting to know Steven

Q: Do you have a specific Route that you usually drive?

A: The BxM4C. Prior to this, I was on the Route 64 for 11 years.

Q: What do you enjoy most about your job?

A: Meeting different people and also building connections with regular riders. Driving the Route 64 for 11 years, the riders are like family to me. I still keep in touch with some of them.

Q: What do you like to do outside of work?

A: I love jazz. My favorite musician is Boney James. Each year I go to the Berks Jazz Fest in Redding, PA.

Q: Being a driver can be stressful, how do you get through a challenging day?

A: Laughter. You have to laugh to get through it.

EXIT 19 OFF I-95 Rye, New York

Playland

SAVE UP \$15

George Latimer
Westchester County Executive

WESTCHESTER COUNTY
PARKS

#MyWestchester
post your pic

George Latimer
Westchester County Executive

WESTCHESTER COUNTY
PARKS

#MyWestchester
post your pic

GP 4 6 7 4

WR 4 6 7 5

\$5 OFF RIDES ADMISSION!

Valid for one offer during 2019 season.
Cannot be combined with other discounts or used for group sales. Not valid July 4, holidays or concert days. **Playland!**

GP 4 6 7 6

WR 4 6 7 7

\$5 OFF JUNIOR (UNDER 48") ADMISSION!

Valid for one offer during 2019 season.
Cannot be combined with other discounts or used for group sales. Not valid July 4, holidays or concert days. **Playland!**

GP 4 6 7 6

WR 4 6 7 7

\$5 OFF JUNIOR (UNDER 48") ADMISSION!

Valid for one offer during 2019 season.
Cannot be combined with other discounts or used for group sales. Not valid July 4, holidays or concert days. **Playland!**

(914) 813-7000 | PlaylandPark.org | Exit 19 off I-95, Rye, New York

Cultural Heritage Celebrations 2019

- POLISH - Sunday, May 19**
Noon - 6 p.m., Kensico Dam Plaza, Valhalla
 - ASIAN-AMERICAN - Saturday, June 1**
Noon - 6 p.m., Kensico Dam Plaza, Valhalla
 - ALBANIAN - Sunday, June 2**
Noon - 7 p.m., Kensico Dam Plaza, Valhalla
 - PORTUGUESE - Sunday, June 2**
Noon - 7 p.m., Ridge Road Park, Hartsdale
 - AFRICAN - AMERICAN - Sunday, June 23**
Noon - 7 p.m., Kensico Dam Plaza, Valhalla
 - HISPANIC - Sunday, July 14**
Noon - 7 p.m., Kensico Dam Plaza, Valhalla
 - ARAB - AMERICAN - Sunday, July 21**
1 p.m. - 7 p.m., Ridge Road Park, Hartsdale
 - ITALIAN - Sunday, July 21**
Noon - 7 p.m., Kensico Dam Plaza, Valhalla
 - IRISH - Sunday, July 28**
1 p.m. - 5:30 p.m., Ridge Road Park, Hartsdale
(Admission: \$5 adults; free children 14 and under)
 - HERITAGE OF INDIA - Sunday, August 4**
12:30 p.m. - 6:30 p.m., Kensico Dam Plaza, Valhalla
 - JEWISH - Sunday, August 18**
Noon - 6 p.m., Kensico Dam Plaza, Valhalla
 - MUSLIM HERITAGE - Sunday, August 25**
Noon - 7 p.m., Kensico Dam Plaza, Valhalla
- All events, dates, times and locations are subject to change.
- (914) 864-PARK | parks.westchestergov.com

#MyWestchester
post your pic

Facebook, Twitter, YouTube, Instagram icons

Did You Know?

Bee-Line Reps will be at several of the County's Annual Heritage Festivals located at Kensico Dam. Stop by our table to pick up a system map, schedules, and learn about all forms of sustainable transportation!

The MetroCard® Van June 2019 Schedule



Wednesday, June 19
Yonkers City Hall
10 a.m. – Noon

White Plains TransCenter
Water St. and N. Lexington Ave.
2 - 3:30 p.m.

Monday, June 17
New Rochelle
Huguenot St./North Ave.
10 a.m. – Noon

Mount Vernon
Petrillo Plaza
1 - 3 p.m.

Thursday, June 20
Yonkers City Hall
10 a.m. – Noon

White Plains
Galleria Mall/Forever 21
2 - 3:30 p.m.

Tuesday, June 18
Peekskill Library
10:30 a.m. - 12:30 p.m.

Tarrytown
Wildes and Cortlandt Sts.
(by McDonald's)
1:30 - 3 p.m.

Friday, June 21
Yonkers Will Library
9 a.m. - 2 p.m.

Saturday, June 22
Yonkers City Hall
9:30 a.m. - 12:30 p.m.

White Plains
Galleria Mall/Forever 21
2 - 3:30 p.m.



Bike Racks

You may have noticed bike racks on the new 60-foot articulated buses. The remaining Bee-Line buses will also have racks installed on them, with the entire fleet having racks by the end of summer. It will take some time, but when in place, you will be able to take your bike on all Bee-Line buses. Bicyclists are responsible for securing and carefully removing their bike.

Always keep an eye on your bike and remember it when you get off the bus. If you forget your bike, call the Lost and Found at (914) 376-6361. For routes 16, 18 and 31, call (914) 737-3803.