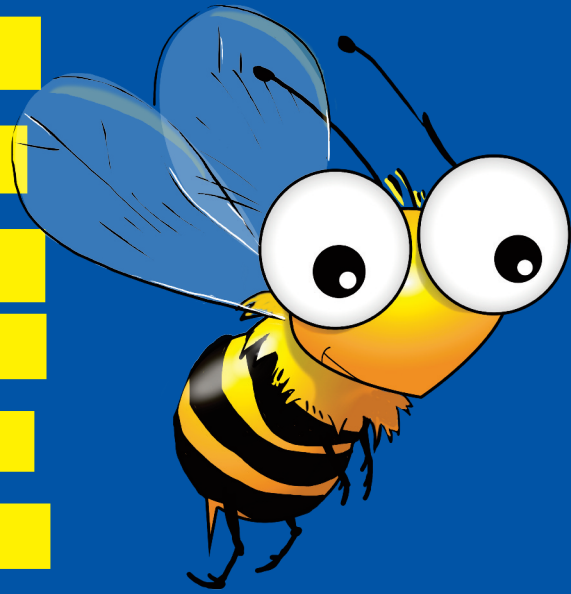


# BEE LINE



S  
M  
V  
E  
N  
Z

A Newsletter by the Westchester County Department of Public Works and Transportation

Vol. 1

## An Early Morning Buzz!

Are you an early riser on weekends and need to get your day started? If so, great news! The Bee-Line is adding earlier trips on various routes where morning ridership is strong and demand exists for earlier service.

The following trips will be added on Tuesday, September 4th:

### Saturdays

#### Route 8

The first northbound trip leaving Mt. St. Vincent will now depart at 6:50AM.

#### Route 40

The first southbound trip leaving Grasslands will now depart at 6:50AM.

### Sundays

#### Route 4

The first southbound trip leaving Getty Square will now depart at 6:50AM.

#### Route 7

The first eastbound trip leaving Getty Square will now depart 6:35AM.

The first westbound trip leaving New Rochelle will now depart 7:38AM

#### Route 20

The first southbound trip will now leave White Plains at 7:00AM.

#### Route 25

The first eastbound trip leaving Getty Square will now depart 7:15AM.

The first westbound trip leaving the Bronx will now depart 8:00AM.



## Shop Til' You Drop! Attention Cross County Center Shoppers (and Workers)

It probably won't surprise you that the Cross County Shopping Center is one of Bee-Line's busiest destinations, based on the number of daily buses serving the complex and the amount of passengers boarding and exiting buses. In fact, there are more passengers on Saturdays on the Bee-Line Route 20 than on a typical weekday! To better serve passengers, Bee-Line is adding extra service on Saturday evenings to the Route 20 southbound with trips starting at the Macy's bus stop at 8:36PM, 9:06PM, 9:36PM and 10:01PM. This means that buses will now be departing every 15 minutes, saving you time and getting you home faster after a long day.

## What's New for Westchester Community College Students?

Did you know that over 1,000 WCC students take Bee-Line to and from school on a typical school day? With 5 routes (including 2 routes providing express service from Yonkers and Mount Vernon), Bee-Line buses are your way to get to and from class! Did you also know that the Bee-Line Route 40 provides frequent service between WCC and transfer points to other routes that can get you all across Westchester County?

Bee-Line is adjusting some of its trip times leaving WCC on weekday evenings to better align Route 40 service with the end time of classes. Not only will this save riders time, it will allow anyone looking to get home to Yonkers to have a quick and convenient transfer opportunity. For example, there will now be a bus departing WCC at 8:00PM, which arrives 10 minutes later at the Tarrytown Road/Hillside Avenue Stop. A short walk around the corner will allow passengers to transfer to the southbound Route 6 at 8:14PM, and the southbound Route 5 at 8:20PM.



# More Trips Between Getty Square and the Bronx!

Nearly 15% of Bee-Line passengers transfer to the New York City Subway, and a large number of these transfers are provided by routes that serve Getty Square in Yonkers, including the Routes 1, 2, 4 and 25. Bee-Line planners are conducting a study of Bee-Line service between Getty Square and the 242<sup>nd</sup> Street/Van Cortland Park subway station. Based on initial findings, it is clear that passengers sometimes have to squeeze on crowded buses and would like additional service. There is no need to wait to make improvements where they are most needed...

**We are thrilled to announce the following service improvements between Getty Square and the Bronx:**

## Routes 1 and 2

- One additional weekday morning southbound trip between Getty Square and 242<sup>nd</sup> Street, departing at 6:56AM.
- One additional Saturday night northbound Route 1 trip, departing 242<sup>nd</sup> Street at 11:15PM.
- More frequent Saturday evening service on northbound Routes 1 and 2 buses departing 242<sup>nd</sup> Street between 8:30-11:30PM.

## Route 4

- Larger vehicles will be used to reduce overcrowding on certain Saturday afternoon trips.
- A new Sunday morning southbound trip leaving Getty Square at 6:50AM.
- Two new northbound trips on Sunday evenings leaving Bedford Park Blvd at 7:30PM and 9:00PM.

## Route 25

- A new eastbound Sunday trip departing from the Yonkers Train Station at 7:15AM.
- A new westbound Sunday trip departing Nereid Ave at 8:00AM.

## Route 43

- Express Service to Bradhurst Avenue.

## Spread the News!

Bee-Line's Route 43 express service between Mount Vernon and Valhalla is being revamped to better serve passengers. Starting in September, all Route 43 buses will make stops along Bradhurst Avenue immediately after the Westchester Medical Center. This will provide more direct service to the medical office building at 19 Bradhurst Avenue, along with Blythedale Children's Hospital.

# The MetroCard® Van that Serves Westchester

Did you know there is a full-service MetroCard Van that makes its rounds in Westchester every month? It is a one stop shop for the following services:

- Buy a regular MetroCard • Apply for a Reduced-Fare MetroCard • Refill existing MetroCards

For more information on the MetroCard Van and other MetroCard locations call the Smart Commute Program at (914) 995-4444 or visit [www.westchestergov.com/smartcommute](http://www.westchestergov.com/smartcommute)



## September Schedule

Monday, Sept. 17	Tuesday, Sept. 18	Wednesday, Sept. 19	Thursday, Sept. 20	Friday, Sept. 21	Saturday, Sept. 22
<b>New Rochelle</b> Huguenot St/North Ave 10 a.m. - noon • <b>Mount Vernon</b> Petrillo Plaza 1 p.m. - 3 p.m.	<b>Peekskill</b> Peekskill Library 10:30 a.m. - 12:30 p.m. • <b>Tarrytown</b> Wildey and Cortlandt Streets (By McDonalds) 1:30 p.m. - 3 p.m.	<b>Yonkers</b> City Hall MCU Bldg. 36-40 South Broadway 10 a.m. - noon • <b>White Plains</b> Trans-Center Water Street and North Lexington Avenue 2 p.m. - 3:30 p.m.	<b>Yonkers</b> City Hall MCU Bldg. 36-40 South Broadway 10 a.m. - noon • <b>White Plains</b> Galleria Mall/Forever 21 Main St./MLK Blvd. 2 p.m. - 3:30 p.m.	<b>Yonkers</b> Will Library, 1500 Central Park Ave/ Tuckahoe Road 9 a.m. - 2 p.m.	<b>Yonkers</b> City Hall MCU Bldg. 36-40 South Broadway 9:30 a.m. - 12:30 p.m. • <b>White Plains</b> Galleria Mall/Forever 21 Main St./MLK Blvd. 2 p.m. - 3:30 p.m.

**Car Free Day**  
 Giveaways, games, refreshments  
**FRIDAY, 9/21**  
**PETRILLO PLAZA, MV**  
**7AM-5PM**

[www.westchestergov.com/beelinebus](http://www.westchestergov.com/beelinebus)  
 Find Bee-Line in Real-Time on Google Transit  
 (914) 813-7777  
 24-Hour Automated Schedule Info.  
 Live Agents Weekdays 8 a.m. to 4 p.m.

**2 Trip MetroCards**  
**NOW SOLD AT ALL METRO-NORTH RAILROAD STATION TICKET MACHINES!**